



A Little Spot of Heaven

The Laurel Lake Ledger

Laurel Lake Association

33rd Annual Newsletter Spring 2020

THE STORY OF THE KIMBALL COTTAGE ON SOUTH POND/LAUREL LAKE IN FITZWILLIAM



Back toward the end of the Nineteenth Century some residents of Troy were getting fed up with the hot summers and pollution of their mill town, and noting that many Keene residents were fleeing the summer heat to properties on Spofford Lake, they decided to do something to seek relief. They scouted around and found some promising property on the east shore of South Pond (the name changing at that time to Laurel Lake), in Fitzwilliam, belonging to Reuben Angier. So, four families banded together (Asa Dort, Franklin Ripley, Charles W. Whitney, and Dr. Melvin T. Stone). On a deed dated Oct 4, 1898 the land was purchased for the sum of ten dollars. Their purpose was to use it for daytime or weekend use, for water sports and, after a boathouse was built, for boating. There was a very pleasant sandy beach and bottom, for easy wading and swimming.

Soon they got rather tired of traveling the seven miles from their homes in Troy. So, they decided to build a house on their new lot, which they did in 1900. The “parking” of horses had always been a problem, and in June 1900 they acquired land (for the sum of one dollar, across the street and south a bit) from Calvin Perry, grandfather of the current Calvin Perry. They built a barn and stable, and then the boathouse next to the cottage. Immediately back of the boathouse was the outhouse, sole toilet until 1938.

By the 1930s the properties on the Lake and for the Barn (moved to Maine in 1988 by a family member and rebuilt as part of his home) had come down to descendants of the Whitneys and Stones by the name of Kimball. They lived in Lexington, MA, and their travel by car took about the same time as the horse and buggy used to take from Troy. In these years Mr. Kimball created a map of the Lake by taking soundings of its depth and hand drawing pictures of many of the cottages around it. (A copy hangs in the Town Hall.)

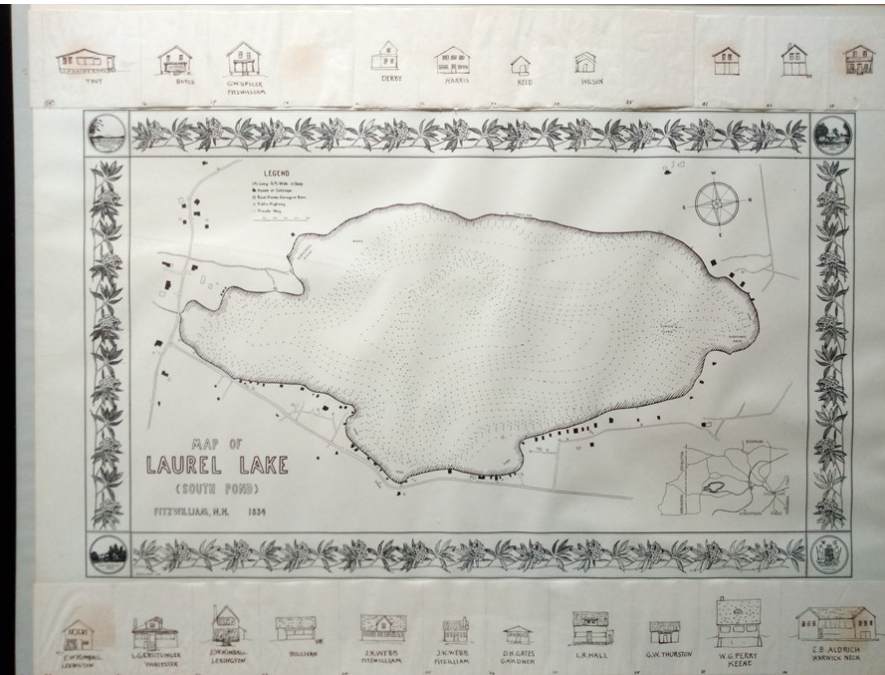
The 1940s saw a new generation at Kimball cottage. Roland Greeley, who married Polly Kimball (and the cottage) commuted by train from Cambridge to the Depot where Polly and an increasing number of kids met him in the family car. The stove in the cottage was kerosene, the refrigerator was an ice chest using ice delivered to the door by the ice-man. Fresh drinking water came from a spring down the road (used by the first inhabitants in 1900). Vegetables arrived along East Lake Road on the Joseph’s horse drawn wagon (from Winchendon) fresh each week.

The cottage was a delight for young children with a screened sleeping porch upstairs on the Lake side and a mere dash down the stairs to the water’s edge. The golden sandy beach - which went out to a raft floating over one’s head - ended the dash. Many evenings after dinner would see a noisy splash fight between young boaters in the Cove, often with a dazzling/spectacular sunset as a backdrop to the West. Lying in bed in those days, you heard the call of a whippoorwill, more often than the loon.



Even on a cold foggy morning the sleepers on the porch would be awakened by the call of a bugle drifting across the Lake from South Pond Cabins boys' camp. They heard a rousing: "It's a beautiful morning for America. All up and down to the Lake for a dip!" Later in the day the sounds from the boys' camp folk would be of the young coxswains calling out the strokes at the stern of the sculls as they raced down the lake.

On the South end of the Lake as everyone knows today, is Fleur de Lis, the girls' camp – attended by several generations of girls from Kimball cottage. The Fleur de Lis girls would regularly clop by on the horses they rented from the Whip-ple's stables near the Camp. And on warm August evenings, the game was to get ahead of the column of girls as they walked en masse to Warren's for an ice cream cone treat. Spicer Lane and Point are named for the proprietors who ran Warren's.



Daytime fun in the early '50s included aquaplaning using an old door (with a leak squirting water straight up at the rider) behind Peter Merrifield's 5 horsepower motorboat. We gazed with awe and envy at Cal Perry who zoomed by in his 15 horsepower Merc! Sometimes we'd catch a glimpse of another summer resident in the Cove when Christine McGuire would pull up in her Cadillac and chauffeur, and later on be seen paddling a canoe with an arched back and high chin.

Mr. Kimball's map of the Lake

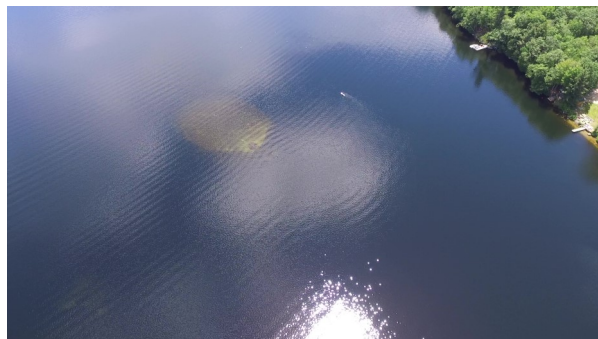
Other summer delights included going with our cousins on West Lake Road to the Quarry Swim Club (the granite quarry off East Lake Road just south of the Depot) for a cool swim when the Lake was warm. Diving off the boards attached to the granite ledge was a treat and jumping from the higher cliffs an increasing challenge as we grew older and climbed higher. And, the many Saturday evenings we spent square dancing at the Town Hall to the calls of Duke Miller and the music of his band (until the Town gave up on this wonderful attraction).

The 120 year old building with its open studding and simple layout has not been much changed after the early years and has lasted well! Apparently, it is the 3rd oldest on the Lake. First honor goes to the Thomas Blodgett's camp* built in 1892 and 2nd oldest the White cottage just south of White's Beach. Today, the seventh generation of family is enjoying our remarkable camp and Lake. And hoping their elders will keep both in good shape for their enjoyment and that of their children to come.

Submitted by Roland and Sons Brad & Ned Greeley

* Editor's note: "South Pond Cabin" at the Southern tip of the lake, now owned by Joe & Wendy Larson

Right: Drone view of sunken island, courtesy of Tom White.





YELLOW IRIS

The AIS (Aquatic Invasive Species) Committee, formerly known as the Weed Watch Committee, is comprised of volunteers who are trained to inspect Laurel Lake for aquatic invasive species such as milfoil. The committee has divided the Lake into nine sections. Each section is patrolled monthly by two volunteers over the course of the summer. They look for unusual changes in their section and search for exotic species that they have learned are potential dangers to maintaining a healthy lake. In 2019 it was brought to our attention that Yellow Iris, which blooms on the shores of many lakes and ponds across the country, is considered to be an invasive species. Its deep and matted roots constrict the absorption of oxygen into freshwater lakes and ponds. After they bloom, different colored iris plants cannot be distinguished. One must see the color of the iris blooms in order to make an identification. With the support of the Laurel Lake Association's Board of Directors, our volunteers made an effort to remove the seed pods from all iris on the edge of the lake, hoping to prevent the spread of new plants. The seed pods were placed in plastic bags and taken to the dump.



We want to inform the Fitzwilliam community of the importance of our renewed efforts to dispose of this potentially harmful plant. In late May or early June of this year we shall try to remove all the yellow iris from Laurel Lake. The blue iris or Blue Flag variety is not harmful and will be left alone. Because of the impact of the Corona virus, volunteers may not be able to complete identification of the iris plants before their blooms have dropped. If your property edges Laurel Lake, please check to see if you have any yellow iris blooms. Label these plants so that a volunteer will be able, if necessary, help with their removal. If you choose to remove these plants yourself, please be sure to bag them with their deep roots intact. We will gladly assist in disposing of them at the dump, if you need help.

If you are contacted by a member of the AIS Committee, please extend your co-operation. Our volunteers have a strong desire to maintain the health of Laurel Lake. We thank all who share our concerns and who assist in helping to keep it free of species that can damage it. If you have concerns or questions about Yellow Iris, you can learn more about this plant by going to: http://nyis.info/invasive_species/yellow-flag-iris/.

You may also contact me with questions about our work and for information about becoming a volunteer. Beth Samuels at evsamuels1@yahoo.com.

Submitted by **Beth Samuels**, Laurel Lake Association Aquatic Invasive Species Committee Chair



Pick Up the Poop!



In keeping with our focus on keeping the lake clean, we ask that dog owners/walkers clean up any poop their dog leaves behind on the roads around the lake and anyone's property. We all love dogs but their left behind droppings wash into the watershed and lake and elevate the E.coli levels of the water. I'm sure you pick up after your dog at home and have a supply of poop bags you can use (and dispose of properly in your trash, not the side of the road). The lake thanks you!



2020 SUMMER EVENTS—LAUREL LAKE ASSOCIATION

Notice: Due to the COVID-19 virus, all events are subject to cancellation. The Spring Board of Directors meeting (May 30) will be held via video conference. The Spring pot luck supper is cancelled. The Board will evaluate whether an event can be held based upon state and local guidelines. To check on the status of an event, please go to our web site: LaurelLakeAssn.com or on Facebook.

JULY

4th- **9:00 PM** - Celebrate the Fourth of July with the traditional lighting of flares around Laurel Lake.

Flares are available for purchase at Bottoms Up (Rt. 12), Pottery Works (Rt. 119), at the Samuels' camp (18 Laurel Lane) and the LeClaire's camp (369 West Lake Rd.)

18th - 10:30 AM - The **Annual meeting** will be held at White's Field, Laurel Lake Campground, Keene Ave. Our featured speaker is Association member Pat Deyo, an avid fisherman, who will speak about the good biodiversity of the lake. Association business will also be addressed with a picnic lunch following the meeting. Bring a chair (none provided). Note: in case of terrible weather, the meeting will be moved to the restored train depot building in Fitzwilliam Depot, next to the fire station.

18th - 5-7 PM - Concert on the water at Sunrise Rock (west side of lake). Boat on over for some great music.

AUGUST

1st - 11:00 AM - The **30th** Annual Canoe/Kayak Race at Sandy Beach. Registration starts at 9:30 AM.

Kids race at 11:05 a.m., 1.5 mile Jr/Sr at 11:00, 6 3/4 miler at 12:20, 2 1/4 mile at 12:30 p.m.

SEPTEMBER

5th - 10:00 AM - The **33nd** Dresser-Friedman Regatta. Rain date is September 6 at 10:00 a.m..

12th - 9:00 AM - The Board of Directors will meet at Camp Fleur de Lis.

12th - 5:00 PM - The Laurel Lake Association Pot Luck **Supper** will be held at Camp Fleur de Lis to celebrate the finale of the 2020 Summer season. Bring a brunch dish to share. Coffee, plates & silverware will be provided.

MEMBERSHIP REPORT

(as of 5/9/2020)

Membership Year	2018	2019
Adults	259	247
Children	24	23
Total	283	270
Households	140	140

Thank you for your continued support. **Bill Chase, Membership**



MESSAGE FROM THE PRESIDENT OF THE LAUREL LAKE ASSOCIATION

As I compose my first “Message from the President” the near future is uncertain with many events and schedules changed. Our first board meeting of the year will be online via Zoom and the first Pot Luck Supper has been canceled. We will discuss the remaining lake activities at the Spring Board meeting, so be sure and stay tuned on the website and Facebook for updates. What has not changed is the Lake, and the Association’s goal preserving the quality of life on and around the lake for present and future generations. As your new President, I remain committed to continuing to this goal for the next two years of my term.

In an effort to help spread the workload of our activities, I plan to add two committees this year. One to help Chris Briggs to plan, train, and execute the Lake Host Program, and the second to plan and operate the Canoe Race when Charley Brackett retires. These two activities require the most time and effort to execute, and it will help spread the load and keep a flow of people who know the process for the future. Drop me, or any board member, a note if you would like to be on the committee.

In an effort to write a somewhat interesting message, I looked back in the Laurel Lake Ledger archives. They are available on the website thanks to the Olsons, who provided their past copies for scanning and publishing. (Click on the Ledger tab on the top of the webpage) Two things that seemed to be constant themes in the past Ledgers are the number of folks willing to pitch in and maintain the work of the Association. I would not have accepted the President’s position without knowing there were so many willing helpers. Second is the common desire to maintain the quality of the lake for generations to come. Many helping hands for a common goal is the recipe for a successful endeavor.

The report was Ice Out was March 21, an early one but the record of March 11, 2016 still stands. Changes in the climate are occurring, but they have been since the beginning of time. At least we are not headed for an Ice Age; as I get older, I am less tolerant of the cold. As changes occur, we must be ever vigilant to the effects these changes have on our water quality and do our best to be proactive in maintaining our water quality. I hope everyone assessed their runoff after the “Soak Up the Rain” presentation at the Annual Meeting. Turbid or polluted runoff is the largest cause of poor lake quality.

Tom White, President

LAUREL LAKE LOGO PRODUCTS & ONLINE STORE

As we move forward into what could be a new normal in regards to COVID-19 (especially for the short term) this also affects how products are made, ordered and delivered. When it comes to Laurel Lake Logo Products we have all the bases covered for you. There is a supply of pre-printed shirts, sweatshirts, hats, mugs and much more and these will be available for sale at the annual meeting July 18th, at the canoe/kayak race on Aug. 1st, or by appointment. As you know, these events may be cancelled due to the virus and social distancing requirements.

In addition to the limited supply of pre-printed items, we have pivoted to an online store through a local screen printing and design shop located on Winchester St. in Keene NH. The company is Bulldog (a quick internet search for them and you will find the amazing things they are doing to help Cheshire County Communities). Their website is <https://bulldog-design.com/>. Along with their website there is also a special online store setup specifically for the Laurel Lake Association so you can purchase Laurel Lake Logo Products. The web address for the online store is <https://laurellake.itemorder.com/> (as of your reading the store is open for business and you can see many items that can be purchased). How this works is the store will be open until July 5th; at that time Bulldog will close the store and put into production all the orders that were made through July 5th with the products being available 2-3 weeks after the online store is closed (just before the canoe/kayak race). In addition to normal Laurel Lake Logo Products there will also be **30th Anniversary canoe/kayak shirts** as well. There are many ways to pick-up your gear and they include curbside, shipping to you (extra charges may apply). I will also be willing to pick up for anyone and we could do curbside pick-up at my camp at 14 South Pond Rd. (off of White’s Grove Rd. on the east side of the lake). Anyone that needs assistance ordering please contact Bulldog at 603-352-7217.

Joe Pelkey, Jpelk20@yahoo.com, 603-762-2247



IN MEMORIAM

Marion Austin, age 91, passed away Dec. 31, 2018. Widow of Don Austin, long time Treasurer of the Laurel Lake Association, Marion and Don lived in Troy, NH and summered at Laurel Lake for many years. Marion was an educator, teaching elementary education in Troy and was head of the Elementary Education Department at Franklin Pierce College. She was also an avid gardener, known for her roses, including the publishing of a book “Cooking With Roses”. Marion is survived by a sister, two nieces and a nephew.

Susanne Anderson of Haydenville, MA passed away March 10, 2020. Susanne and her family have a camp in White’s Grove which was a place of respite for her. Susanne was a professional musician who sang, played piano and organ, taught piano and voice and directed musical theater. She performed in one way or another at numerous churches in the Pioneer Valley, all the Five Colleges, was an accompanist for dance companies at Jacob’s Pillow and sang in choruses of Leonard Bernstein, Robert Shaw and Sarah Caldwell. Susanne enjoyed her Finnish culture, loved swimming at Laurel Lake and recharging at her camp from a career that kept her occupied 7 days a week, even in retirement. She leaves behind her children Astrid and Zach, a daughter-in-law and two grandchildren.

Jaye Nevins DuBois, 63, died in April, 2020 in Titusville, FL. Jaye grew up at Laurel Lake in the summers at the family camp built in 1949, along with her 7 siblings. Her mother Virginia started summering at the lake in 1930 and was a member of the Board of the Association in the 1980s/’90s. Jaye and Virginia probably set one of the records for longest times around the lake in an early canoe race when they stopped at several camps along the way to chat and perhaps have a little cocktail! Jaye was an RN and worked at Athol Hospital, hospitals in the Springfield area and did private duty nursing for several years. Jaye and her husband Bob summered full time at the lake, visiting Sandy Beach daily, and wintering in Florida. She leaves behind Bob, her daughter Samantha, 3 granddaughters and siblings Jimmy (Bart), Jackie, Jennifer and Jeff.

K.O.

With the passing of **Steve Olson** in October, 2019 at 69, the Laurel Lake community has lost one of its most noted members. Steve was renowned for his vast knowledge of the birds of the area, especially the loons, as well as the trees and plants around the lake. This is partly because Steve had been coming to Laurel Lake since he was 10 months old!

The Olson family was among the first that came from the Worcester area to camp on tent platforms in White’s Grove in the early 1930’s. Later, in the 1940’s, Steve’s father, Avy, met a young woman named Mary Smith from Athol, whose family had also begun summering at Laurel Lake. The two were married in 1946, and Steve was born in August of 1950. He spent every summer at the lake until he got a summer job at 15. From then on he spent weekends and vacations, with his wife Kathy in the camp his father built.

Steve is well known to people around the lake for his work in the Laurel Lake Association. He was a weed watcher, served on the board of directors for 6 years, was the co-secretary for 7 years, and was the Editor of the Laurel Lake Ledger from 2005 to 2017. He’s also known for his “walks” around the lake, sometimes taking several hours because of all the stops to chat along the way.

Steve was definitely a colorful character. He was our go-to guy for lake history, any questions about music (especially the Grateful Dead), and current literature. He was outgoing, gregarious, and loved to talk! He was a librarian and retired as head of the audio-visual department at Boston Public Library.

Sandy Beach, White’s Grove, and the whole Laurel Lake community have lost a true lake lover and friend. He leaves behind his wife Kathy, sister Wendy and sister-in-law Mandy and Olson cousins.

We’ll miss you, Steve.

Jeannette Gardner



HIGHLIGHTS OF 2019 LAKE TESTING RESULTS

The full water test report from the Volunteer Lake Assessment Program is included on the next two pages of this Ledger. Laurel Lake is classified as oligotrophic, which is the highest of the three trophic categories, based on dissolved oxygen (DO), chlorophyll-a, transparency, and plant growth. Our test results are compared, in this report, with results of NH waterbodies in the same category.

The Laurel Lake 2019 “Report Card” is the colored table near the top of the first page of the report. The 2019 results for these parameters are similar to those from the past few years. Average total phosphorous levels in the upper water layer have been good, and relatively stable, since monitoring began. The phosphorous levels continue to be lower than the state median for oligotrophic lakes.

Growth of algae is measured by chlorophyll-a level. Algal growth has significantly improved (decreased) since monitoring began in the 1980’s, but there was a sharp increase in the average chlorophyll level in 2019. It was higher than any year, since 2001, and much greater than the threshold for oligotrophic lakes. We will have to wait until we have more data to find out if 2019 results were an aberration, or cause for concern.

Lake water clarity has decreased (worsened) since monitoring began. Average water clarity (transparency) measurements continued to decrease in 2019, compared to 2018, and was only slightly better than the state median for oligotrophic lakes. There has not been a lower average clarity measurement in over 30 years of Laurel Lake sampling (see the bar graph at the bottom of page 2 of the report). These changes are thought to be caused by the increase in frequency and intensity of storms that we have been experiencing in recent years. Stormwater runoff from shoreland properties, wetland systems, roads, and driveways flush organic material and silt into the lake, and wave action stirs up the sediment. Lakeside property owners can help stop the decline in water clarity by reducing stormwater runoff.

For help reading the full VLAP report go to: https://www.des.nh.gov/organization/divisions/water/wmb/vlap/annual_reports/2016/documents/how-to-read-your-report.pdf

Thank you to the 2019 sampling team: Tom and Tricia Coleman, Gail Connelly, Phyllis Lurvey, Evelyn Chase, Perry Nadeau, Kathy Olson, Beth Samuels, Barbara Schecter, and Rachel Shrives.

Barbara Green, Chair, Water Testing Committee

Stormwater Solutions Available

Last summer, Barbara McMillan was invited to speak at the Laurel Lake Association Annual Meeting to describe a variety of methods to soak up the rain, to decrease runoff of stormwater into the lake. Six lakeshore property owners signed up for a site visit to their property by a team from “Soak up the Rain New Hampshire” at NHDES. The purpose of the visit was to identify any stormwater runoff issues that may be affecting the lake, and make suggestions on how to address them. They took photos and followed-up with a write-up of the visit and fact sheets describing “stormwater solutions”.

Information is available at: www.soaknh.org.

Contact:

Lisa Loosigian

[Soak Up the Rain NH](#) Program Coordinator

Watershed Management Bureau

Water Division, NH Department of Environmental Services

29 Hazen Drive, P.O. Box 95

Concord, NH 03301-0095

Phone: 603.271.1190

Email: Lisa.Loosigian@des.nh.gov



Volunteer Lake Assessment Program Individual Lake Reports
LAUREL LAKE, FITZWILLIAM, NH

MORPHOMETRIC DATA				TROPIC CLASSIFICATION		KNOWN EXOTIC SPECIES		
Watershed Area (Ac.):	768	Max. Depth (m):	13.4	Flushing Rate (yr ⁻¹):	0.4	Year	Trophic class	
Surface Area (Ac.):	153	Mean Depth (m):	6.1	P Retention Coef.:	0.78	1992	MESOTROPHIC	
Shore Length (m):	3,500	Volume (m ³):	3,826,000	Elevation (ft):	1,099	2006	OLIGOTROPHIC	

The Waterbody Report Card tables are generated from the DRAFT 2018 305(b) report on the status of N.H. waters, and are based on data collected from 2008-2017. Detailed waterbody assessment and report card information can be found at www.des.nh.gov/organization/divisions/water/wmb/swqa/index.htm

Designated Use	Parameter	Category	Comments
Aquatic Life	Phosphorus (Total)	Good	Sampling data is better than the water quality standards or threshold for this parameter.
	pH	Bad	Data periodically exceed water quality standards or threshold for this parameter by a large margin.
	Oxygen, Dissolved	Encouraging	Limited data for this parameter predicts water quality standards or thresholds are being met, however more data are necessary to fully assess the parameter.
	Dissolved oxygen saturat	Encouraging	Limited data for this parameter predicts water quality standards or thresholds are being met, however more data are necessary to fully assess the parameter.
	Chlorophyll-a	Good	Sampling data is better than the water quality standards or threshold for this parameter.
Primary Contact Recreation	Escherichia coli	Good	Sampling data commonly meet water quality standards or threshold for this parameter.
	Chlorophyll-a	Very Good	All sampling data meet water quality standards or threshold for this parameter.

BEACH PRIMARY CONTACT ASSESSMENT STATUS

LAUREL LAKE - TOWN BEACH	Escherichia coli	Good	Sampling data commonly meet water quality standards or threshold for this parameter.
LAUREL LAKE - CAMP FLEUR DE US BEACH	Escherichia coli	Very Good	All sampling data meet water quality standards or threshold for this parameter.

WATERSHED LAND USE SUMMARY

Fry, J., Xian, G., Jin, S., Dewitz, J., Homer, C., Yang, L., Barnes, C., Herold, N., and Wickham, J., 2011. Completion of the 2006 National Land Cover Database for the Conterminous United States. *PERS*, Vol. 77(9)-858-864. For larger image contact NHDES.



Land Cover Category	% Cover	Land Cover Category	% Cover	Land Cover Category	% Cover
Open Water	28.0	Barren Land	0	Grassland/Herbaceous	0
Developed-Open Space	3.42	Deciduous Forest	17	Pasture Hay	1.46
Developed-Low Intensity	0	Evergreen Forest	23.68	Cultivated Crops	0
Developed-Medium Intensity	0	Mixed Forest	20.99	Woody Wetlands	3.44
Developed-High Intensity	0	Shrub-Scrub	0.17	Emergent Wetlands	0

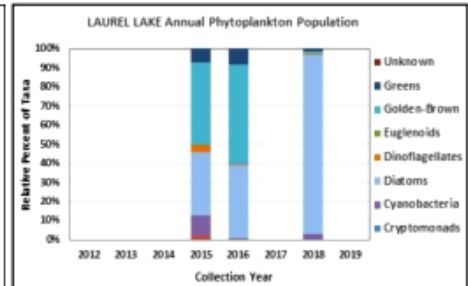


VOLUNTEER LAKE ASSESSMENT PROGRAM INDIVIDUAL LAKE REPORTS
LAUREL LAKE, FITZWILLIAM
2019 DATA SUMMARY

RECOMMENDED ACTIONS: Lake algal growth has significantly decreased since monitoring began and nutrient levels have also generally decreased, and we hope to see this continue! However, lake water clarity has decreased (worsened) since monitoring began. Lake clarity was lowest when water color and turbidity levels were highest following a significant storm event that likely flushed wetland systems rich in dissolved organic matter that imparts a tea color to the water. The increased frequency and intensity of storm events and flushing of wetland systems may be contributing to the declined water clarity. Continue to evaluate the relationship between water color and clarity. Epilimnetic pH levels have been higher (better) in recent years and may be a result of NH's surface waters recovering from the impacts of historical acid precipitation. For more information read NHDES' "Acid Rain Status and Trends Report" found on the website. Keep up the great work!

OBSERVATIONS (Refer to Table 1 and Historical Deep Spot Data Graphics)

- **CHLOROPHYLL-A:** Chlorophyll levels were elevated from June through August. Average chlorophyll level increased sharply from 2018, was greater than the state median, and much greater than the threshold for oligotrophic lakes. Historical trend analysis indicates significantly decreasing (improving) chlorophyll levels since monitoring began.
- **CONDUCTIVITY/CHLORIDE:** Epilimnetic (upper water layer), Metalimnetic (middle water layer) and Hypolimnetic (lower water layer) conductivity and/or chloride levels were within a low range and were slightly greater than the state medians. Historical trend analysis indicates stable epilimnetic conductivity levels since monitoring began.
- **COLOR:** Apparent color measured in the epilimnion indicates the lake water was moderately tea colored (brown) in June, and then decreased to within a lightly tea colored (light brown) range in July and August.
- **E. COLI:** North Beach and Swim Club E. coli levels were very low and much less than the state standard of 88 cts/100 mL for public beaches.
- **TOTAL PHOSPHORUS:** Epilimnetic phosphorus levels were slightly elevated in June, decreased to low levels in July, and remained stable in August. Average epilimnetic phosphorus level increased from 2018 and was less than the state median and the threshold for oligotrophic lakes. Historical trend analysis indicates relatively stable epilimnetic phosphorus levels since monitoring began. Metalimnetic phosphorus levels were slightly elevated in July and the turbidity of the sample was also elevated suggesting a layer of algal growth at that depth. Hypolimnetic phosphorus levels were low in June and increased to a moderate level as the summer progressed.
- **TRANSPARENCY:** Transparency measured with (VS) and without (NVS) the viewscope was low (worse) in June potentially due to higher color and turbidity levels, and then increased (improved) as the summer progressed but remained below average for the lake. Average NVS transparency decreased (worsened) from 2018 and was slightly greater (better) than the state median. Historical trend analysis indicates significantly decreasing (worsening) transparency since monitoring began.
- **TURBIDITY:** Epilimnetic turbidity level was elevated in June following a significant storm event and a during period of high water levels and dark water color. Metalimnetic turbidity level was elevated in July likely due to a layer of algal growth. Hypolimnetic turbidity levels were elevated in July and August potentially due to the formation and accumulation of organic matter in hypolimnetic waters under anoxic conditions.
- **pH:** Epilimnetic pH levels were within the desirable range 6.5-8.0 units, however epilimnetic pH levels have historically fluctuated below the desirable range. Historical trend analysis indicates stable epilimnetic pH levels since monitoring began. Metalimnetic and Hypolimnetic pH levels were slightly acidic and less than desirable.



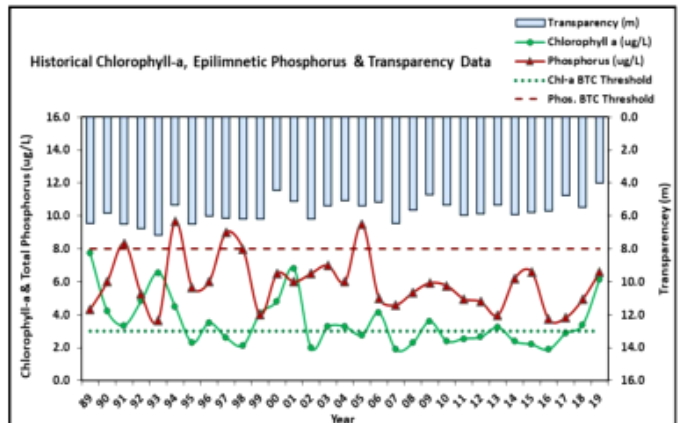
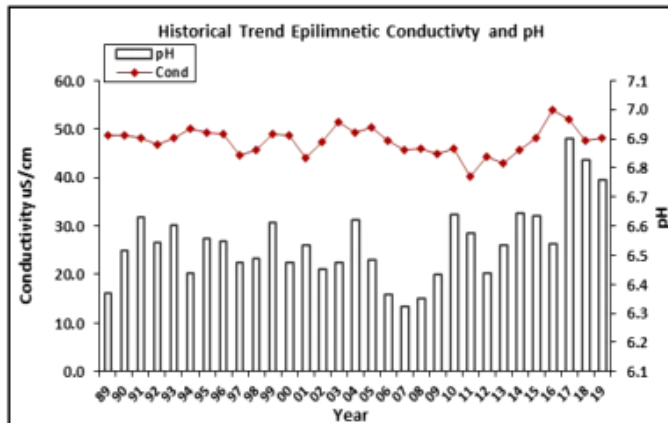
Station Name	Table 1. 2019 Average Water Quality Data for LAUREL LAKE - FITZWILLIAM										
	Alk. mg/l	Chlor-a ug/l	Chloride mg/l	Color pcu	Cond. us/cm	E. coli mpn/100ml	Total P mg/l	Trans. m	Turb. ntu	pH	
Epilimnion	4.2	6.15	9	43	48.1		7	4.02	4.3	0.71	6.76
Metalimnion					49		9			1.39	6.16
Hypolimnion					53.7		11			3.41	6.03
North Beach						2					
Swim Club						1					

NH Water Quality Standards: Numeric criteria for specific parameters. Results exceeding criteria are considered a water quality violation.
Chloride: > 230 mg/L (chronic)
E. coli: > 88 cts/100 mL – public beach
E. coli: > 406 cts/100 mL – surface waters
Turbidity: > 10 NTU above natural level
pH: between 6.5-8.0 (unless naturally occurring)

NH Median Values: Median values for specific parameters generated from historic lake monitoring data.
Alkalinity: 4.5 mg/L
Chlorophyll-a: 4.39 ug/L
Conductivity: 42.3 uS/cm
Chloride: 5 mg/L
Total Phosphorus: 11 ug/L
Transparency: 3.3 m
pH: 6.6

HISTORICAL WATER QUALITY TREND ANALYSIS

Parameter	Trend	Explanation	Parameter	Trend	Explanation
Conductivity	Stable	Trend not significant; data show low variability.	Chlorophyll-a	Improving	Data significantly decreasing.
pH (epilimnion)	Stable	Trend not significant; data show low variability.	Transparency	Worsening	Data significantly decreasing.
			Phosphorus (epilimnion)	Stable	Trend not significant; data moderately variable.



LAKE HOST PROGRAM



Our lakes must continue to be protected from the spread of invasive species, especially this summer as boaters are more excited than ever to get out onto our lakes! Lake Hosts are considered essential workers who provide an important service.

Working in conjunction with NH Lakes, who provides a grant based around the number of boats and volunteer hours, Laurel Lake Association will be able to pay to staff the public boat ramp once or twice a week during peak hours of our summer season. With additional volunteers we can help to keep our lake healthy and clean!

Lake Hosts will be helping boaters prevent the spread of invasive species while providing information about the **Clean, Drain & Dry** method for the prevention of aquatic invasive species. The most common way that invasive aquatic plants and animals could be spread to our lake would be by plant fragments or animal larvae on boats and trailers from infested water bodies.

Please be sure to educate yourself, your guests or tenants about the **Clean, Drain & Dry** method for preventing the spread of aquatic invasive species. Due to safety concerns Lake Hosts will not be able to provide handouts or stickers at lakeside this season.

NH LAKES provides informational brochures free of charge to homeowners. Request a supply by emailing lakehost@nhlakes.org Provide your full name and mailing address and how many copies you would like.

Our [COVID-19 Safety Precautions](#) are aligned with respect to CDC guidelines and are aimed at keeping our Lake Host Team safe this summer. Lake Hosts will be trained in all these precautions and it is their responsibility to follow these guidelines to keep themselves, boaters, families, and the rest of our Lake Hosts safe.

We continue to need volunteers to provide matching hours coverage at the boat ramp so please consider donating a few hours a month during the summer to being a Lake Host. Online training is provided and it can be a pleasant way to spend time, meeting new people and enjoying the water. Please contact me at the email below to volunteer.

Christopher Briggs - Lake Host Program Coordinator
lakehost@southpond.org

New Website

Check out our new website: **LaurelLakeAssn.com**. It's actually the same website address we've had for a long time but has been revamped and put on a new server. Perry Nadeau, long time Board member and now Past President, set up our original website in 1999, back when they were pretty new for small organizations. James Baldwin graciously hosted the site for free on his server. This past winter Perry moved the site to a new server and redesigned it and it is being co-managed with Tom White. If you have comments or suggestions for the site, please use the Contact Us feature. Perry and Tom, like all of us on the Board, volunteer our time to the Association (in exchange for fancy titles and annual salaries of \$0) so it may take a bit of time for someone to see & respond to your email but someone will get back to you. You can also find the contact information for Officers, Board Members and Committee Chairpeople on the website.



Left & below: 2019 Annual Meeting



2019 Canoe Race:
Left: Children's SUP race
Below: Tug 'O' War



2019 AQUATIC INVASIVE SPECIES SURVEY REPORT

The members of the AIS Committee, formerly known as the Weed Watchers, conducted surveys of Laurel Lake during the months of June, July and August of 2019. Once again, we were fortunate that no new invasive species were found. However, late in the season we learned that Yellow Iris, which crops up along the banks of the Lake, are invasive and need to be removed. (Please read the accompanying article in this issue of the Ledger). Due to the complexities of the Corona virus, it is uncertain that we shall be able to identify and remove all these plants over the course of 2020. If you do have Yellow Iris growing on your property, please identify it so that our volunteers can assist in its removal. Surveys for the month of June were difficult to complete accurately due to the unusual turbidity of the Lake. Many longstanding members of the community remarked they had never seen the Lake in such a murky condition. The high waters and turbidity were due to very heavy rains, run off, and dense pollen accumulation in the wet, cool spring. One volunteer noted that the Mountain Laurel at the lake, which is usually in bloom by the first weekend of June, did not reach full bloom until June 26th.

In July a large increase of Pickerel Weed on the east side of the Lake near the Swim Club was observed. I consulted with Amy Smagula of the NH DES, who said, "...Pickerel Weed is not invasive. The amount of growth is due to increased or decreased seed production, which is caused by the amount of precipitation in a given period." We certainly had an increase of precipitation this year! In reviewing the surveys of the summer months, the most prolific, non-invasive plants were: Pipewort, Floating Heart, and Lobelia. We found concentrations of gelatinous green algae in swaths around the lake from mid-season onward, and as well as colonies of non-invasive bryozoans.

During the 2019 season three of our longtime Committee members resigned after ten or more years of service. Mary Ann Perry, Linda Anderson, and Barbara Green have been acknowledged as Emeritae members. Thanks to them for their many years of dedication and service. Barbara will continue her work testing the water quality of the Lake, and assist in training her replacement.

The work of this Committee would not be possible without the ongoing support and efforts of our amazing volunteers. They deserve our gratitude and thanks for their willingness to serve each month. They are: Barbara Green, Charley Brackett, Roberta Nadeau, Tricia LeClaire, Barbara Dumont, Phyllis Lurvey, Ken DeBlieu, Lily Pierannunzi, Bill Townsend, Gail Connelly, Pat Spicer, Catherine, Brad and Ned Greeley, Cat Lathrop Strahan and Nancy Fey-Yensen. We always welcome new volunteers who are willing to learn more about what's happening in the waters of Laurel Lake and who are ready to volunteer for an hour or two each summer month.

Residents who live on the shores of Laurel Lake are reminded that they, too, are stewards of our special natural resource. Please be vigilant about how your own behavior impacts on the environment. Consider having your property evaluated by the DES to prevent water run off. Do not use fertilizer on your lawn. Make sure that soap products and insecticides are safe for use around the Lake. Be sure that anything you plant near the shore or on your property does not contain unwanted exotic or invasive seeds. If you notice any unusual growth or change near your shoreline, please report it to me. Let's keep Laurel Lake as our "little spot of heaven".

Submitted by:

Beth Samuels, Chair of the AIS Committee

evsamuels1@yahoo.com (843-838-8338 winter) (603-585-9467 summer)



Left: Pipewort. Photo courtesy of Wikibooks.com



Right: Pickerel Weed. Photo courtesy of lakerestoration.com



Laurel Lake Association Treasurer's Report 2019

Beginning Balance \$31,774.11 (as of last Treasurer's Report on 11/14/18)

2019 Income (Deposits)

Description	Amount
Canoe Race (Entries / Raffle)	\$1543
Flares	\$600
Membership	\$2795
Donations	\$420
Logo Items	\$2466
	Total Income: \$7824

2019 Expenses (Checks written)

Expense Description	Amount
Canoe Race	\$1,783.69
Logo Items	\$2,472.70
Organization Dues	\$400.00
Water Testing	\$240.00
Ledger Printing	\$700.19
Annual Meeting	\$375.94
Postal Fees	\$65.00
Concert on the Lake	\$300.00
Sailboat Regatta	\$201.00
	Total Expenses: \$6538.52

Income (Deposits) less Expenses (Checks written) = Net increase of \$1285.48

Savings and Checking Account Balances (People's Bank) as of May 2, 2020

- Checking Account: \$17,323.47
- Savings account balance: \$504.32
- Total of checking and savings: **\$17,827.79**

Savings Account Balance (Service Credit Union) as of May 2, 2020

- Primary Savings: **\$5.16**

Certificate of Deposit (Service Credit Union)

- Total account balance: **\$16,632.99**

Total Association Assets as of May 2, 2020: \$34,465.94.

Net change of + \$2691.83 since last report.

Respectfully Submitted,

Mike King, Treasurer



2019 - 2020 OFFICERS

Tom White - President	Kathy Olson - Vice President
Liz Young - Secretary	Mike King - Treasurer
Beth Samuels - Secretary	Perry Nadeau - Past President

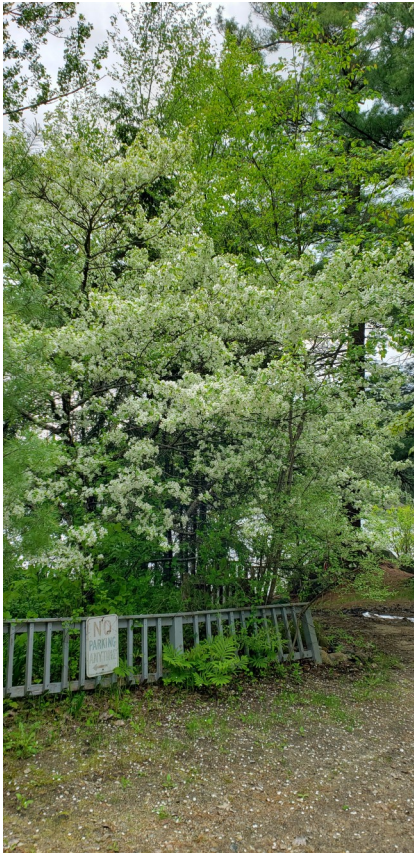
BOARD OF DIRECTORS

Charley Brackett	2020	Bill Townsend	2021
Barbara Brooks	2020	Patrick McNamara	2021
Bill Chase	2020	Gail Connelly	2022
Jessica Pierannunzi	2020	Jack Dumont	2022
Barbara Green	2021	Joe Pelkey	2022
Bill Samuels	2021	Terry Silverman	2022

COMMITTEE CHAIRPERSONS

Kathy Olson	Editor Laurel Lake Ledger
Barbara Green	Water Testing Committee
Beth Samuels	Aquatic Invasive Species Survey Committee
Barbara Dumont	Nominating Committee
Jack & Barbara Dumont	Annual Meeting/Family Picnic
Charley Brackett	Canoe/Kayak Race
Bruce Hill	Commodore Dresser-Friedman Sunfish Regatta
Joe Pelkey	LLA Logo Products - T & Sweatshirts & Hats
Bill Chase	Membership
Chris Briggs	Lake Host Program
Terry Silverman	4th of July Celebration Flares
John Fitzwilliam	Swim Club Representative
Perry Nadeau	Concert on the Lake

**Visit our Web Site at: www.LaurelLakeAssn.com
AND NOW ON FACEBOOK - SEARCH FOR LAUREL LAKE ASSOCIATION**



Left:
Springtime
at the Lake
(crab-
apple tree).

Right: Dad &
son kayaking.
Below: A
gusty fall day at
the lake.
(Photos from
Kathy Olson)



Right: Fall at the Lake (northeast
corner next to Sandy Beach.)
Drone shot courtesy of Tom
White





2019 CANOE/KAYAK RACE RESULTS

[Category, Winner & Time]

3/4 Mile Children's Race:

Girl's Canoe: Lucy Whiteram & Claire Ceremuga (15:39)

Boy's Canoe: Nathan Pelletier & Connor Pelletier (12:09)

Girl's Kayak: Margo Roguet (11:05)

Boy's Kayak: Mikey Cintron (12:50)

Girl's Stand Up Paddleboard: Kayleen Leigh (14:15)

Boy's Stand Up Paddleboard: Mason Pelkey (22:07)

1.5 Mile:

Stand Up Paddleboard (ages 17 and up): Colin McGinn (21:20)

2 1/4 Mile:

Family Jr/Sr Canoe: Dan Pelletier & Connor Pelletier (30:47)

Men's Canoe: Eric Jones & Fred Thompson (24:45)

Women's Kayak: Jean Fountain (39:54)

Men's Kayak: Nathan Pelletier (29:39)

Tandem Kayak: Mike King & Ethan Hill (33:51)

6 3/4 Mile:

Women's Racing Canoe: Megan Cook & Sonya Rousseau (1:22:27)

Men's Racing Canoe: Phil Hodgkins & Justin Braddock (1:28:40)

Mixed Racing Canoe: Mary Hamilton & Tim Garland (1:00:55)

Solo Racing Canoe: Ted Kenyon (1:07:52)

Touring Kayak: Larry Johnson (1:30:14)

Tandem Kayak: Bob & Pam Balla (1:07:09)

ICF Kayak: David Wiltey (1:01:39)

Tug 'O' War Winners: Corey White & Keith Hevey

Runners Up: Phil Hodgkins & Joe Douglass

Youngest Participant: Beckett Gardner, age 4; **Oldest Participant:** Priscilla Reinertsen, age 76

There were 91 participants in the races, including 35 children, with 62 boats total.

Results submitted by **Kathy Olson**



2019 DRESSER-FRIEDMAN REGATTA



For the first time in many races, the wind showed up to help make the 2019 Dresser Friedman Regatta a success. There were only six boats at the start line this year, and a mechanical failure caused one to drop out. Tom White took the lead on the start with Matt Poulin close behind followed by the rest of the fleet. At the first mark Matt had taken the lead and after a few exchanges, he went on to win with a time of 40 minutes 31 seconds, followed in second place by Tom White at 42 minutes 38 seconds and third place going to Mike King at 43 minutes 19 seconds. First place finisher for the Past three years, Patrick McNamara came in fourth with a race time of 44 minutes and 18 seconds. As last year's winner, Patrick hosted the after race awards party.

Submitted by **Tom White & Beth Samuels**



Mike King, Third Place, Matt Poulin First Place, Tom White, Second Place



Elliot Institute Concerts on the Fitzwilliam Common Summer 2020

July 16th: “The Green Sisters”: Four multi-instrumentalist singers who perform folk, country, blue-grass and Irish music.

July 23rd: “Shokazoba”: A nine-piece horn driven new world funk powerhouse of high energy music.

July 30th: “Walt Sayre Orchestra”: A six piece band performing a variety of ballads, jazz and show tunes; one of Cheshire County’s finest ensembles and a crowd pleaser!

Aug 6th: “Banish Misfortune”: A six-piece traditional Irish music band...full of energy and nostalgia!

Aug 13th: “Alex the Jester”: An American born theatrical clown who performs in the style of a medieval court jester, who combines music, comedy, juggling and stage magic. (Co-Sponsored with Friends of the Library.)

Aug 20th: “The Mark’s Brothers”: A five-piece highly improvisational, danceable, rock-n-roll jam band.

All performances will be from 7:00-8:30 pm on the Common. Bring a chair or a blanket. In case of inclement weather, the venue will be upstairs in the Town Hall or at the Emerson School. (Please check the SIGNBOARDS).



Sandy Beach with the “Big Rock”. Drone shot courtesy of Tom White.

Support Our Local Businesses!

Activities of the Laurel Lake Association have been supported over the years by donations of goods and services from many of our local merchants and families. The annual canoe/kayak race has a popular raffle with many of the prizes donated from local businesses. A special ‘Thank You’ to Camp Fleur de Lis who generously provide their dining room to us for the Pot Luck events and board meetings and to Laurel Lake Campground for use of their field and tent for the annual meeting. Say ‘thanks’ to these merchants and organizations for their support by giving them your business:

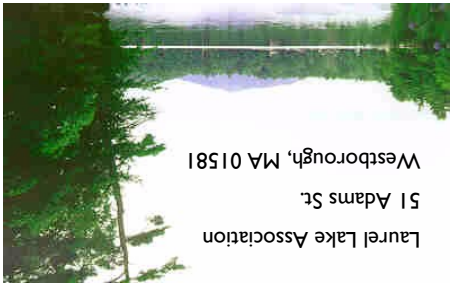
Bullock’s Farm Stand

Ed’s Crossroad Pizza

Flip Side Grill

Clearwater Pool

Pelletier’s Sport Shop



Laurel Lake Association
51 Adams St.
Westborough, MA 01581